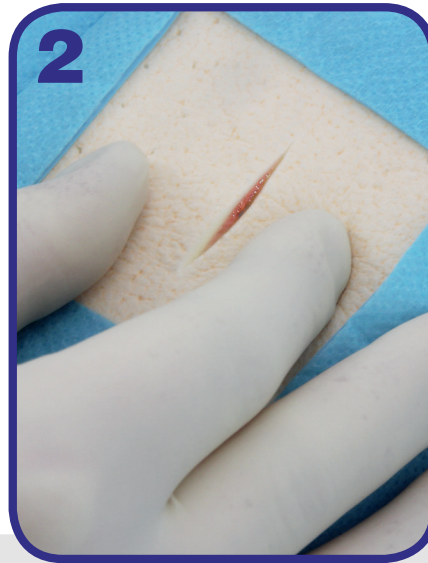


# How to use **INDERMIL®** **flexifuze™** in 3 easy steps.



## Step 1

Hold the applicator in one hand with the tip pointed upward and away from user and the patient to avoid inadvertent contact.



## Step 2

Approximate the wound edges together. Press the device between forefinger and thumb on the dots to break the inner glass ampoule.



## Step 3

**Gently** squeeze the tube between thumb and forefinger until the adhesive appears at the brush tip. Apply the adhesive in a thin film over the length of the wound. Hold the wound closed for 60 seconds to complete the bond.

One device provides wound coverage of over 20cm.